

WELCOME!

OUR WEBINAR WILL START SHORTLY!

Data and Analytics Integration Hubs

The Modern Way to Manage Disparate BI and Data
Environments

June 2020

Sponsored by: 

Data and Analytics Integration Hubs

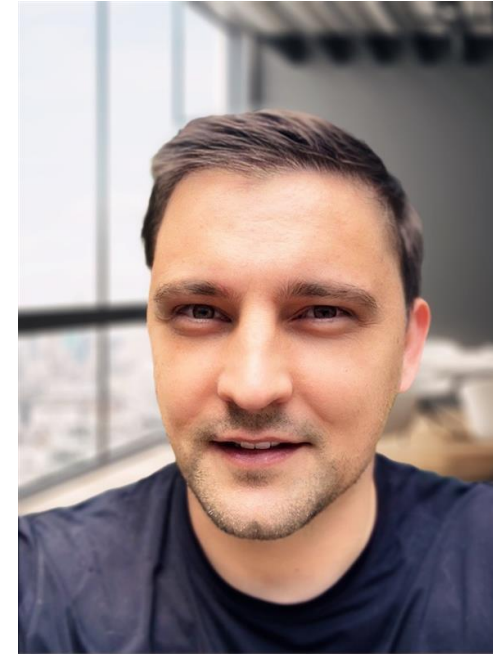
The Modern Way to Manage Disparate BI and Data
Environments

June 2020

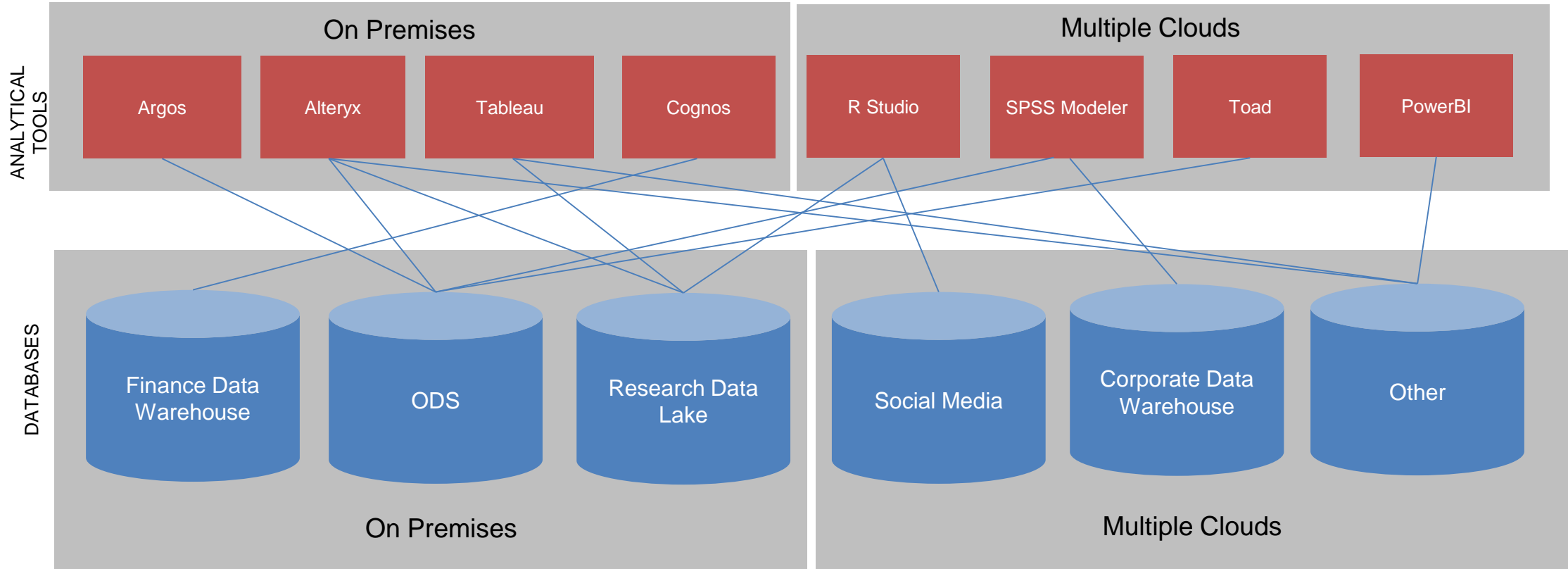
Sponsored by: 



Wayne Eckerson
President
Eckerson Group



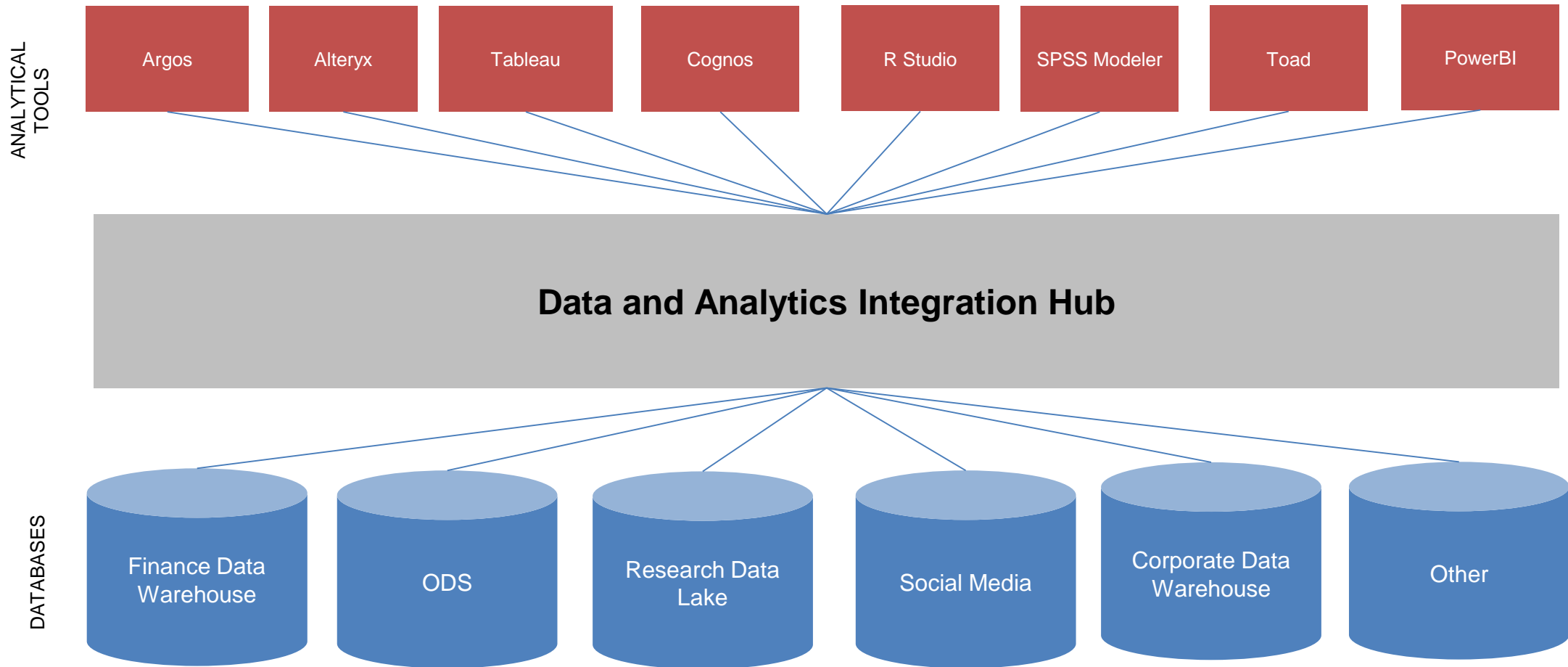
Dragos Georgescu
CTO
DataClarity

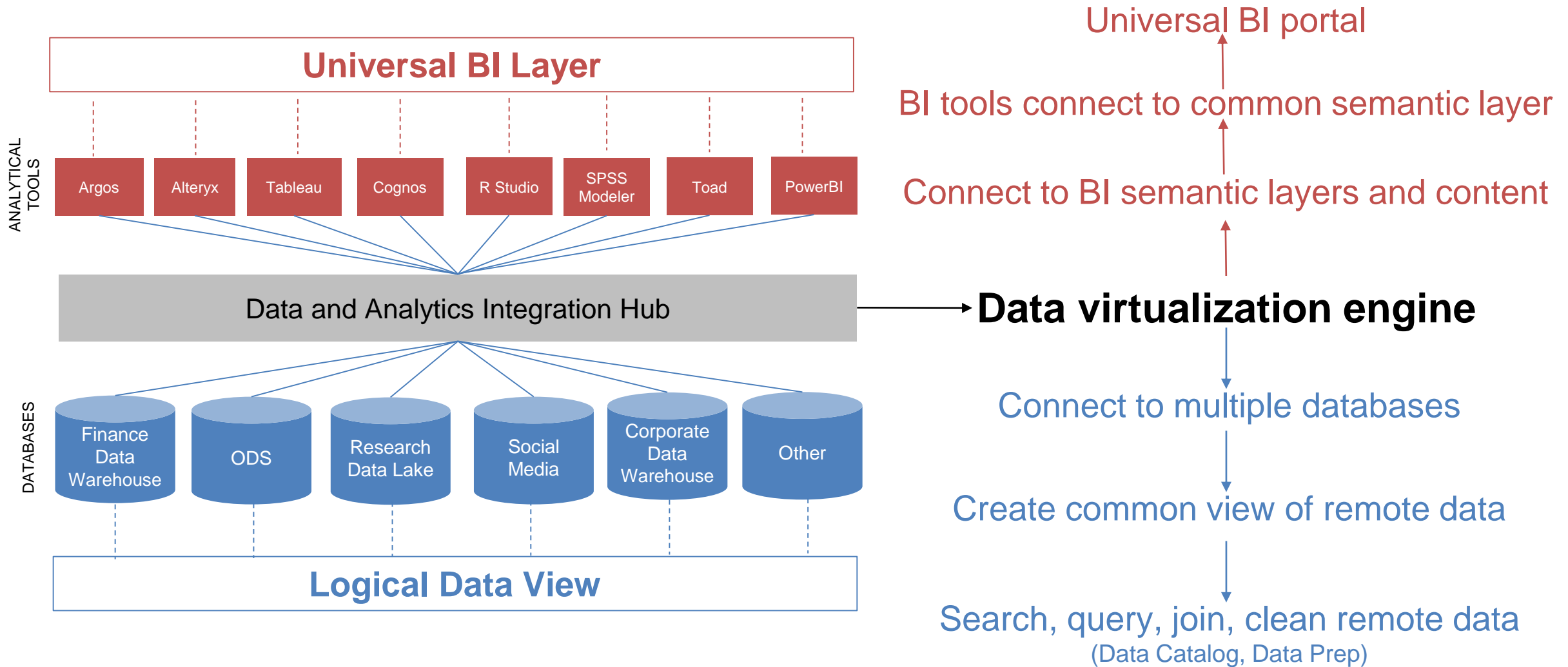


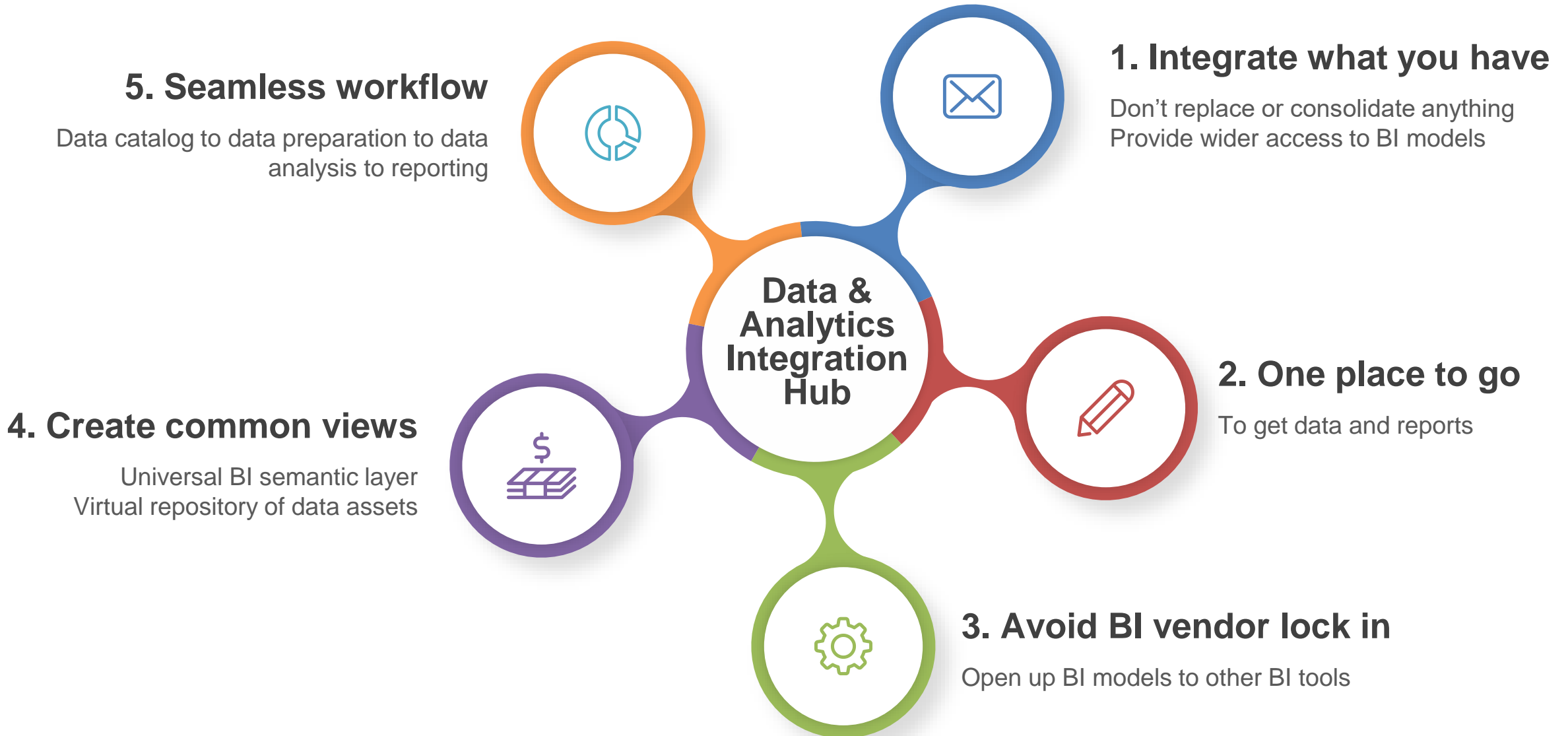
Multiple BI tools
Multiple databases
Multiple applications
Multiple platforms

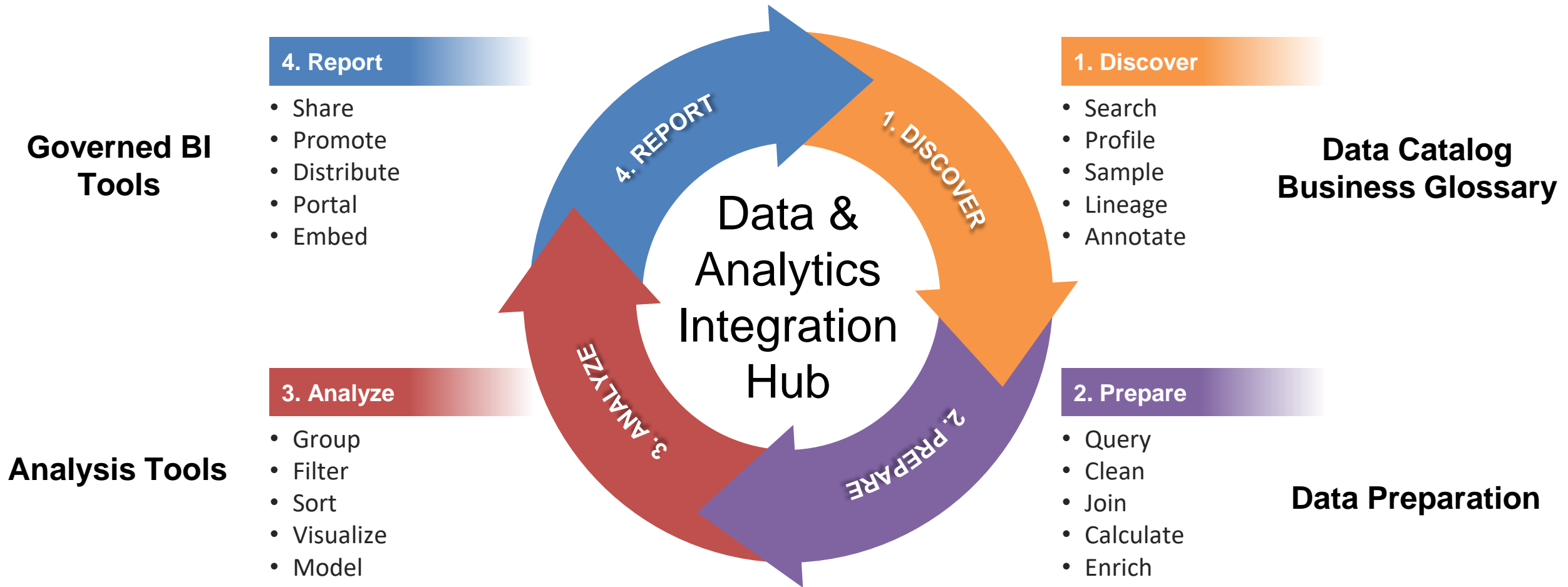


BI and data sources
Logic buried in BI tools
Conflicting metrics and reports
Difficult to find the right data & reports

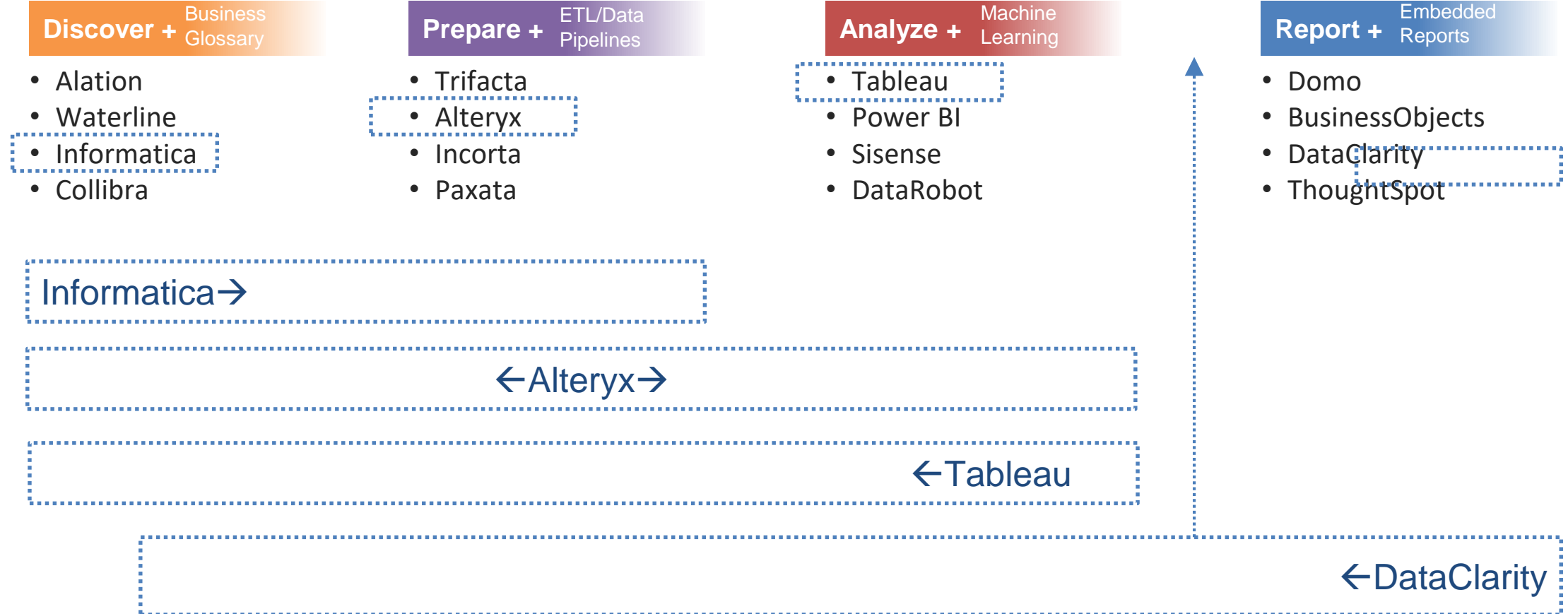








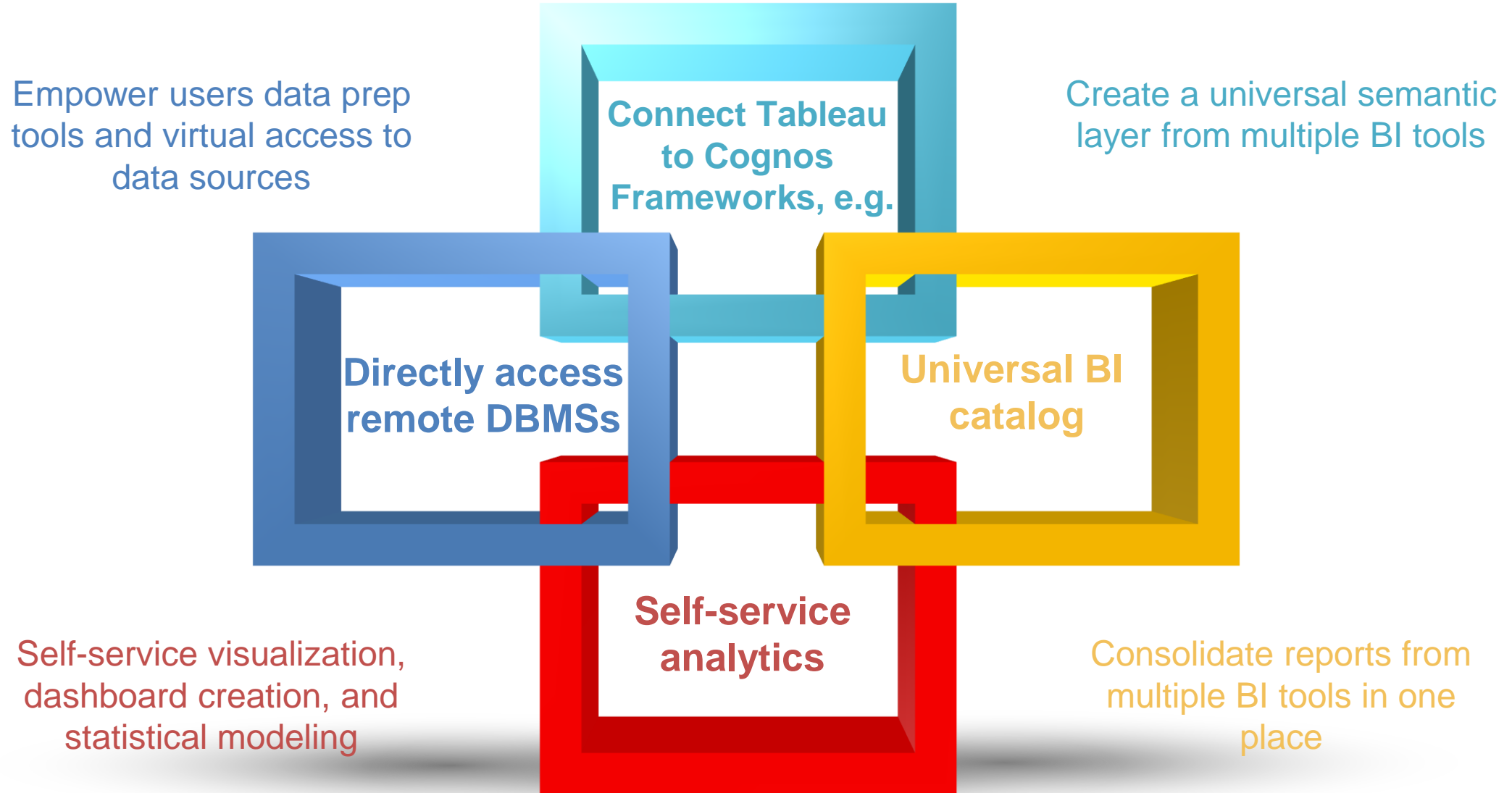
The Urge to Converge



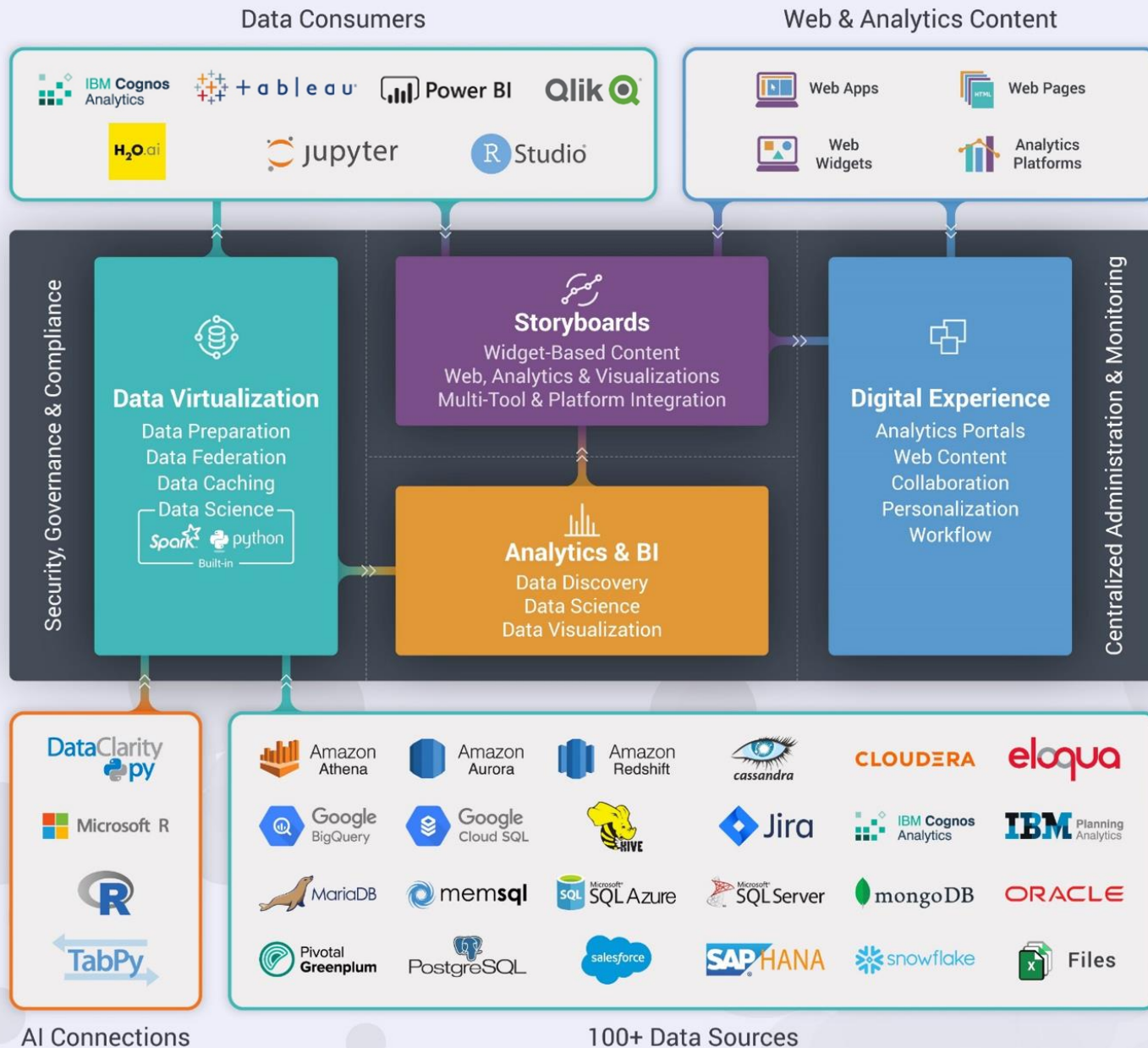
Key Question to Ask Vendors

1. Is your platform designed organically from scratch or through acquisitions?
2. Is it one product or multiple products?
3. Do all modules/products run on the same set of services?

Options for Getting Started



Data & Analytics Integration Hub



KEY BENEFITS

- Single integrated business-driven self-service platform
- 100+ Data sources and types supported
- Data caching powered by machine learning and rules
- Integrated built-in and extensible AI/ML
- 80+ interactive visualizations, geospatial, and web widgets
- Personalized, intuitive, fully-integrated multi-vendor digital experience
- On-Premise, Cloud, Hybrid, SaaS, AWS, Azure, and Google deployable
- Low TCO, high ROI, and rapid implementation and adoption



I'm listening!